

# Operations/Chief Pilot's Working Group



- **Weather Reconnaissance Area (WRA)**
  - History
  - Impacts
  - Way Forward
- **Weather box expansion**
- **CPDLC**



Map Info

NOTAM

 Airspace Reservation Activated

Jun 29, 12:10 PM - 4:00 PM CDT

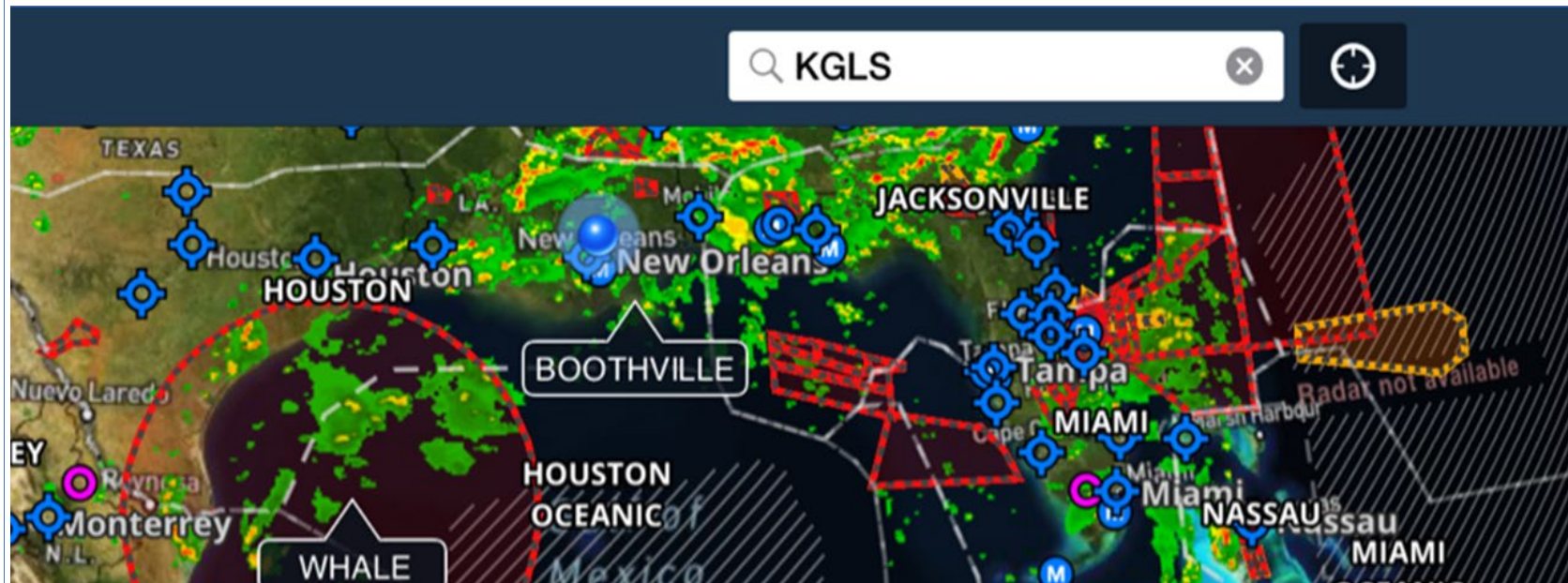
Active, SEE TEXT - SEE TEXT

(TROPICAL DEPRESSION L95) WX  
 RECONNAISSANCE AREA (WRA) WI AN AREA DEFINED AS  
 200NM  
 RADIUS OF 2600N09500W EXCLUDING UNDERLYING APP AND  
 TERRITORIAL WATERS WI 12NM SFC-15000FT. AVOIDANCE ADZ.  
 WX  
 RECONNAISSANCE FLT WITH VER MANEUVERING AND  
 RELEASE OF  
 DROPSONDES ARE EXP. NONPARTICIPATING ACFT SHOULD  
 AVOID THE WRA. IFR  
 ACFT CAN EXP RERTE.

NOTAM ID: A1029/22 (KZHU)

# History

- National Hurricane Operations Plan (2013) – No mention of WRA
- Seems to first appear in NHOP in 2017
- Impacts to GOM offshore flights in 2022



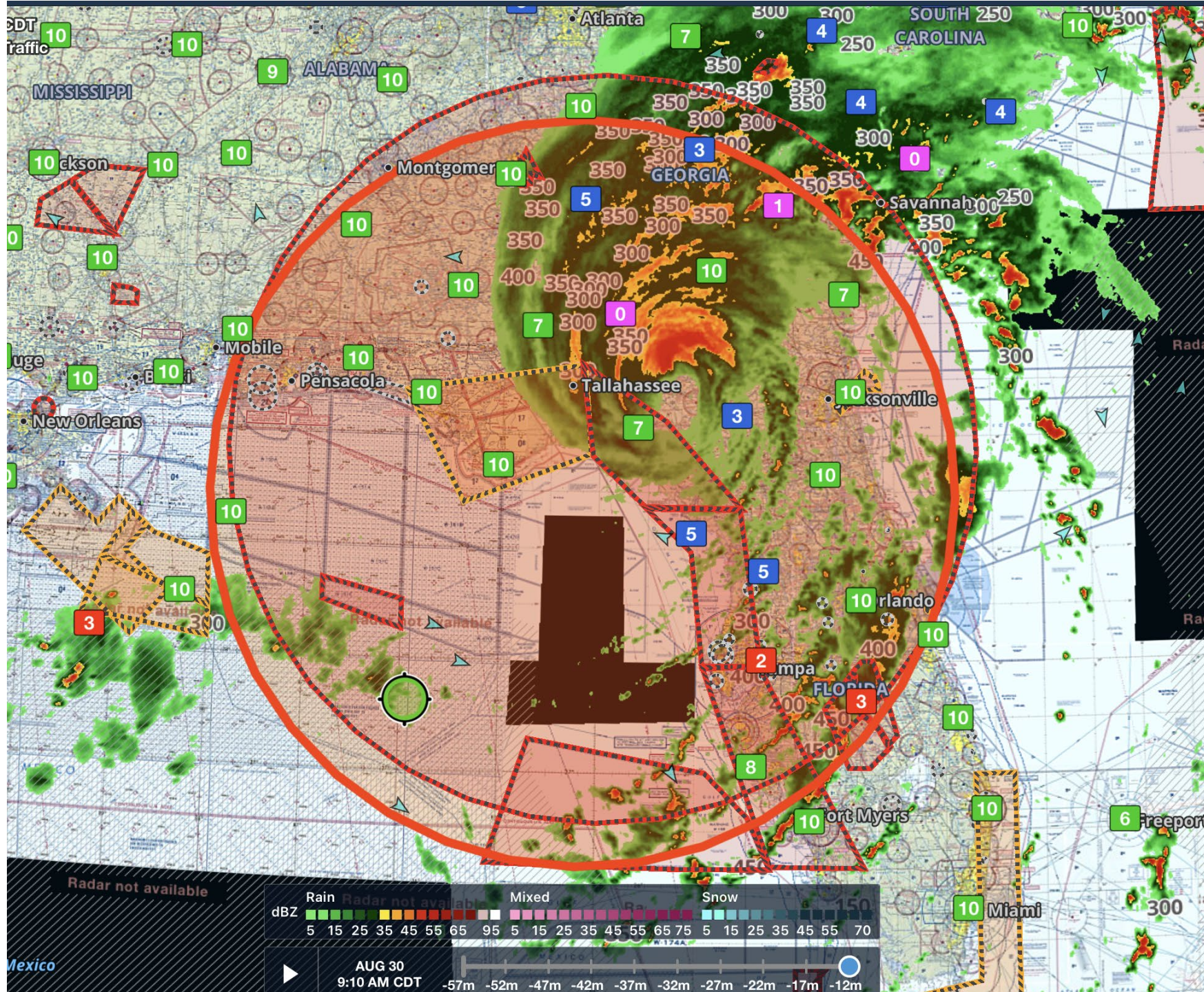
# GOM Operations Snapshot

- Average 20,000 POB offshore
- Approximately 1,200 helidecks offshore (BSEE data)
- FAR Part 135 Operators:
  - Bristow- 63 helicopters
  - Chevron- 14 helicopters
  - Metro Aviation- 5 helicopters
  - Panther Helicopters- 5 helicopters
  - PHI- 65 helicopters
  - Rotorcraft Leasing- 38 helicopters
  - Westwind Helicopters- 17 helicopters

207+ helicopters servicing the offshore energy market

Daily average of 793 flights
- Number of crew change and life saving/SAR/medical transport missions occurring 24/7
- US Coastguard
- DoD (Army, Navy, Airforce)
- FAR Part 91 General Aviation





Airspace Reservation Activated

Aug 30, 4:00 AM - 12:00 PM CDT

Active, SEE TEXT - SEE TEXT

ZMA AIRSPACE HURCN IDALIA WX  
RECONNAISSANCE AREA (WRA) WI AN AREA  
DEFINED AS 200NM RADIUS OF 2930N08412W  
SFC-15000FT. AVOIDANCE  
ADZ. NOAA43 WX RECONNAISSANCE FLT WITH  
VER MANEUVERING AND RELEASE  
OF DROPSONDES ARE EXP. IFR ACFT CAN EXP  
ERTE.

NOTAM ID: A2057/23 (KZMA)